

# ECO Lines™ F80/F150 RGY Color Change Guide

This is a supplemental user manual for F-Series Line Projectors that have color switching. Line colors and sequences can be manually set and remain in memory, or they can automatically switch via external sensors, switches, and a 1-10V signal.

## Description

Each RGY line projector incorporates a control board for color changing functions. The control board is configured with two buttons: M (mode) and S (speed). There are two inputs to the control board: switching and variable voltage. Both inputs are wired to the control panel, switch contact in the front, along with the M and S buttons, and variable 1-10V contact in the rear. The variable voltage connector terminates in a field wiring hookup, whereas the switch connector has a female M15 header.

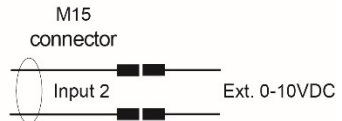
## Color mode configuration

Switch voltage is designed to be configured with a switch such as a motion sensor and will alternate between selected modes based on the switch state. Variable voltage enables the projector to change between color presets based on the input voltage.

### Switch voltage



### Variable voltage



### Input 1 – Switch voltage

Mode 1: 0-2V signal or open circuit  
 Mode 2: 4-10V signal or closed circuit  
 Cycle mode 1 color: single press M button  
 Cycle mode 2 color: single press M button while holding S button

- |                    |                             |
|--------------------|-----------------------------|
| Start: Off         | 7: Red/Green Alternating    |
| 1: Green           | 8: Green/Yellow Alternating |
| 2: Red             | 9: Red/Yellow Alternating   |
| 3: Yellow          | ☞ Order repeats             |
| 4: Green Flashing  |                             |
| 5: Red Flashing    |                             |
| 6: Yellow Flashing |                             |

### Input 2 – Variable voltage

- |                                |
|--------------------------------|
| Off: 0-1V                      |
| Green: 1-2V                    |
| Red: 2-3V                      |
| Yellow: 3-4V                   |
| Green Flashing: 4-5V           |
| Red Flashing: 5-6V             |
| Yellow Flashing: 6-7V          |
| Red/Green Alternating: 7-8V    |
| Green/Yellow Alternating: 8-9V |
| Red/Yellow Alternating: 9-10V  |

**See following flowchart for additional details on controller logic.**

**Controller logic flowchart**

